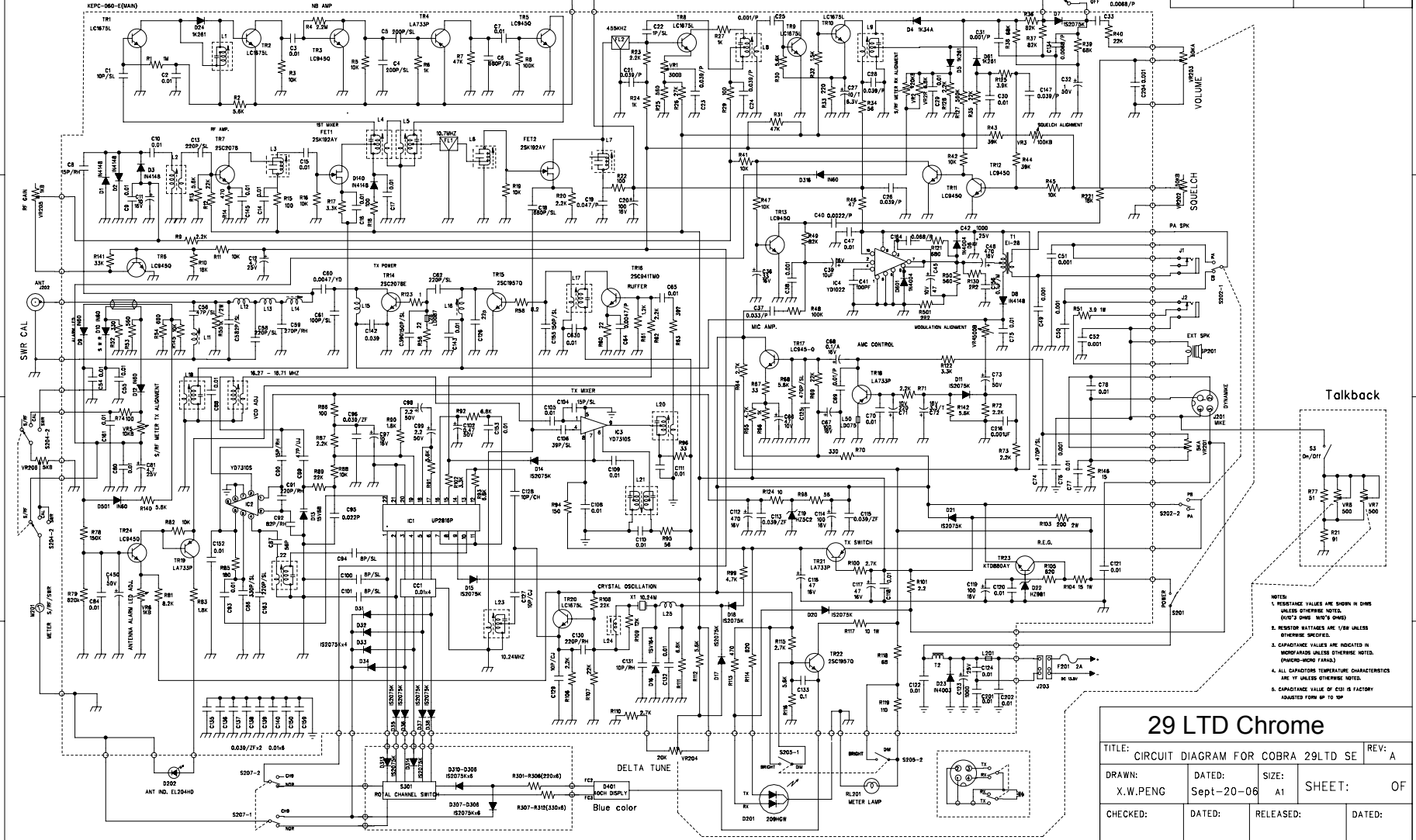


# CIRCUIT DIAGRAM FOR COBRA 29LTD SE

REVISION RECORD

UPDATE TO ECN NO.	APPROVED:	DATE:
-------------------	-----------	-------



- NOTES:
- RESISTANCE VALUES ARE SHOWN IN OHMS UNLESS OTHERWISE NOTED. (K=10<sup>3</sup> OHMS, M=10<sup>6</sup> OHMS)
  - RESISTOR RATINGS ARE 1/8W UNLESS OTHERWISE SPECIFIED.
  - CAPACITANCE VALUES ARE INDICATED IN MICROFARADS UNLESS OTHERWISE NOTED. (MFC=MINI FARADS)
  - ALL CAPACITORS TEMPERATURE CHARACTERISTICS ARE 'Y' UNLESS OTHERWISE NOTED.
  - CAPACITANCE VALUE OF C10 IS FACTORY INDICATED FORM 10 0P

## 29 LTD Chrome

TITLE: CIRCUIT DIAGRAM FOR COBRA 29LTD SE	REV: A
DRAWN: X.W.PENG	DATED: Sept-20-06
CHECKED:	DATED:
RELEASED:	DATED:
SHEET: 0F	