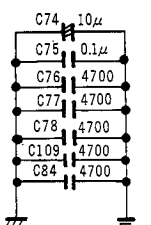
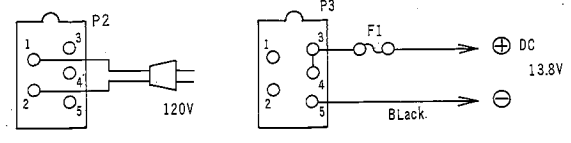
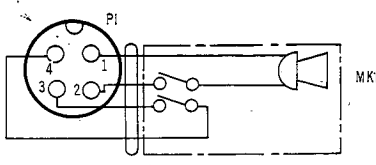


**SCHEMATIC
DIAGRAM**

COBRA 86 XLR

NOTE
 All resistors are in ohms.
 All mylarfilm capacitors indicated as 0.033 etc, are in μF .
 All ceramic capacitors indicated as 22 etc, are in PF.



SCHEMATIC SYMBOL	DESCRIPTION	DYNASCAN PART NO.
I1	Antenna Connector	772-002-9-001
I2	Microphone Connector	773-057-9-001
I3	EXT. SP Jack	773-084-9-001
I4	Power Connector	773-039-9-003
K1	Relay, C-DC12V	441-010-9-001
M1	DC Ammeter	320-065-9-001
MK1	Dynamic Microphone	562-003-9-001
MK1A	Dynamic Microphone with P1	562-022-9-001
PL1	Meter Lamp	400-023-9-001
PL2	CH. Lamp	400-044-9-001
U1	Speaker	580-017-9-001
U2	Ceramic Bypass Filter	140-010-9-001
P1	Ceramic Filter, LFB-4	140-010-9-002
P2	Microphone Plug	775-029-9-001
P3	AC Power Cord	420-014-9-002
PL1A	DC Power Cord	420-014-9-001
F1	Lamp Socket	752-008-9-001
F2	Fuse, 2A	191-251-3-002
F2	Fuse, 0.5A	191-251-3-102
FS1	Fuse Holder, DC	742-022-9-001
FS2	Fuse Holder, AC	742-028-9-001
	Microphone Clip	763-033-9-001
	Shield Washer for ZSD235 and ZSC1678	347-056-9-001
	Shield Spacer for ZSD235 and ZSC1678	759-057-9-001

MISCELLANEOUS

SCHEMATIC SYMBOL	DESCRIPTION	DYNASCAN PART NO.
T1	RF Transformer, 25103	TI
T2	RF Transformer, 25088	T2, 3, 13
T4	RF Transformer, D10753	T4, 5
T6	RF Transformer 25089	T6
T8	AF Transformer	T8
T10	Power Transformer	T10
T11	RF Transformer, 25102	T11

COILS, CHOKES AND TRANSFORMERS (continued)

SCHEMATIC SYMBOL	DESCRIPTION	DYNASCAN PART NO.
IC1	TA7064P (I.C.)	IC1
IC2	TA7205P (I.C.)	IC2
IC7, 9	TC5081P (I.C.)	IC7, 9
IC8	TC5082P (I.C.)	IC8
IC10	TC5080P (I.C.)	IC10
CD1	IS1588 (Diode)	CD1-3, 5-8, 25
CD20	IS1885 (Diode)	28, 29
CD21	IN60 (Diode)	CD9-11, 14-18
CD26	02Z6.2A (Diode)	CD12, 13
CD27	02Z8.2A (Diode)	CD21
Q2	1S2789	Q2
Q3	1S1658FA2Vari Cap (Diode)	Q3
Q4-6, 11, 14, 16, 17, 35-43	2SC372-Y (Transistor)	Q4-6, 11, 14, 16, 17, 35-43
Q8	2SC1166-Y (Transistor)	Q8
Q9	2SC2074-Y (Transistor)	Q9
Q10	2SC1678 (Transistor)	Q10
Q12, 13, 31	2SA495-O (Transistor)	Q12, 13, 31
Q15	2SB435-O (Transistor)	Q15
Q18	2SD235-O (Transistor)	Q18
Q19	2SC735-O (Transistor)	Q19
Q20	2SC733-Y (Transistor)	Q20
Q32, 33	2SK19-GR (Transistor)	Q32, 33
Q34	2SC387A (Transistor)	Q34

CRYSTALS

SCHEMATIC SYMBOL	DESCRIPTION	DYNASCAN PART NO.
X1	Crystal, 15283	X1
X2	Crystal, 15285	X2
X3	Crystal, 15284	X3

SWITCHES (Continued)

SCHEMATIC SYMBOL	DESCRIPTION	DYNASCAN PART NO.
S1	Lever Switch (ANL)	S1
S10	Rotary Switch (CH)	S10

SCHEMATIC SYMBOL	DESCRIPTION	DYNASCAN PART NO.
LI-2	RF Coil, L1904-G1	LI-2
L3	RF Coil, 25106	L3
L4	RF Coil, L1904-G2	L4
L5, 6, 11	RF Coil, 25082	L5, 6, 11
L7	RF Coil, L1998	L7
L12	RF Coil, 25085	L12
L13	RF Coil, 25090	L13
L14	RF Coil, 25086	L14
L15	RF Coil, L1122	L15
L21, 24	Choke Coil, L1447	L21, 24
L22, 23	RF Choke Coil	L22, 23
C32, 45	Electrolytic, 100 μ F/10V	C32, 45
C33	Electrolytic, 10 μ F/12V	C33
C34	BC Capacitor 0.1 μ F/12V	C34
C35	Electrolytic, 1000 μ F/25V	C35
C36	Electrolytic, 1000 μ F/16V	C36
C37	Electrolytic, 100 μ F/16V	C37
C38	Electrolytic, 2200 μ F/25V	C38
C39	Electrolytic, 4700 μ F/50V	C39
C40	Mylar Film, 4700 pF/50V	C40
C41	Ceramic, SL 33 pF/45V	C41
C42	Ceramic, TH 15 pF/45V	C42
C43	Ceramic, UJ 47 pF/45V	C43
C44	Ceramic, UJ 10 pF/45V	C44
C45	Ceramic, YR 220 pF/45V	C45
C46	Ceramic, YR 1000 pF/45V	C46
C47	Ceramic, TH 150 pF/45V	C47
C48	Ceramic, RH 22 pF/45V	C48
C49	Trimmer ECY1ZW 20 x 53	C49
C50	Ceramic, SL 47 pF/45V	C50
C51	Ceramic, SL 3p/45V	C51
C52	Mylar Film, 1000 pF/50V	C52
C53	Ceramic, SL 10 pF/45V	C53
C54	Ceramic, RH 33 pF/45V	C54
C55	Ceramic, UL 1000pF/120V AC	C55
C56	Mylar, 2200 pF/50V	C56
C57	Ceramic, RH 10 pF/50V	C57

CAPACITORS AND TRIMMERS (Continued)

SCHEMATIC SYMBOL	DESCRIPTION	DYNASCAN PART NO.
R1	Solid, 68 ohm, 1/2W	002-102-5-680
R2	Solid, 1 Kohm, 1/2W	001-102-5-102
R4, 17	Semi-Fixed, 100 Kohm	002-104-5-104
R37	Semi-Fixed, 20 Kohm	008-206-9-007
R38, 180	Variable, 20 Kohm	008-300-9-002
R43	Thermister D-33A	004-099-9-002
R51	Variable, 50 Kohm	008-300-9-004
R53	Variable, 50 Kohm with 2C-2P Switch	008-326-9-001
R62	Resistor, 4.7 ohm 2W	013-007-9-002
R63	Resistor, 10 ohm 1W	008-206-9-010
R73	Semi Fixed, 1 Kohm	002-102-5-225
R77	Solid, 2.2 Mohm 1/2W	002-104-5-472
R61, 92	Solid, 4.7 Kohm 1/4W	002-104-5-223
R156	Solid, 22 Kohm 1/4W	002-104-5-223

COBRA 86XLR PARTS LIST

RESISTORS, CONTROLS AND THERMISTORS

SCHEMATIC SYMBOL	DESCRIPTION	DYNASCAN PART NO.
C1	Ceramic, SL 120 pF/45V	020-157-9-004
C2, 4, 36, 37, 39, 98,	Ceramic, SL 220 pF/45V	020-097-9-009
C3	Ceramic, SL 5 pF/45V	020-097-9-007
C5, 213, 214, 94	Ceramic, SL 22 pF/45V	020-097-9-006
C6, 13, 14, 15, 16, 20, 28, 32-35, 38, 40, 44, 46, 56, 70	YR 4700 pF/45V	020-088-9-008
~73, 76-79, 82, 92, 93, 99-102		
104, 107-109, 111-112, 115-118, 153, 169, 171, 176, 183, 184, 186, 216-218	Electrolytic, 1 μ F/50V	022-076-9-002
C7, 66	Electrolytic, 1 μ F/50V	022-076-9-001
C8	Ceramic, SL 150 pF/45V	020-097-9-002
C9	Ceramic, RH 15 pF/45V	020-157-9-001
C11, 17, 165	Ceramic, SL 2 pF/45V	020-097-9-004
C18, 27, 45	Electrolytic, 3.3 μ F/50V	022-076-9-002
C19, 22, 24, 25, 50, 55, 86, 168, 187, 188, 196, 200,	Mylar Film, 0.033 μ F/50V	025-040-9-003
C26, 181		
C29, 195, 197	Mylar Film, 0.01 μ F/50V	025-060-9-001
C31, 87, 103, 158, 189, 190, 192, 219, 251, 252, 23	Electrolytic, 100 μ F/10V	022-076-9-010
	Ceramic, YR 470 pF/45V	020-097-9-022

CAPACITORS AND TRIMMERS

NOTE: Standard value resistors and capacitors are not listed, values may be obtained from schematic diagram.

Specify serial number when ordering replacement parts.