



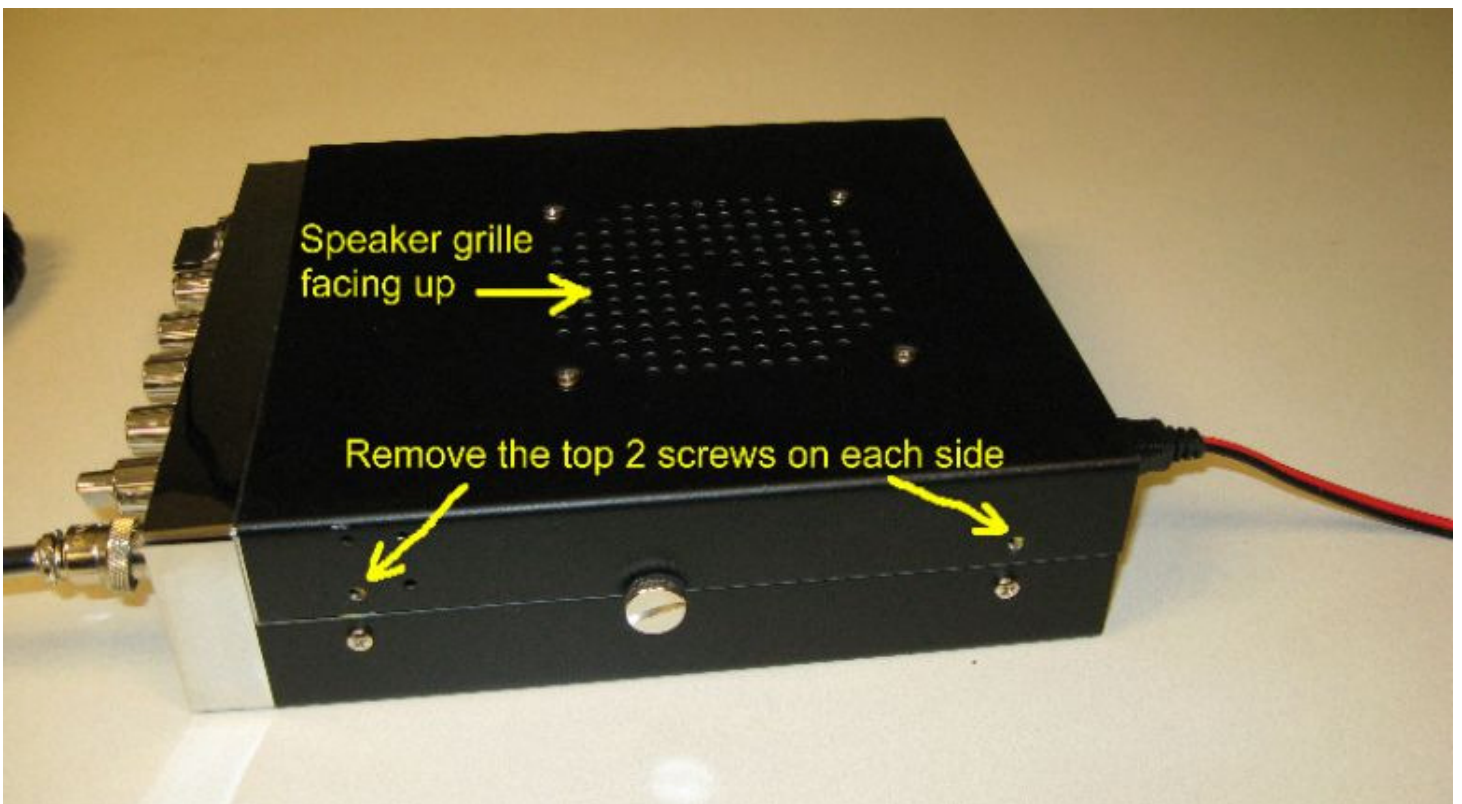
Adjusting the antenna light on the 29 LTD

The 29 LTD (and variants) have an antenna light on the front panel. The antenna light is labeled ANT.

The antenna light should only come on if the SWR of the antenna is over 3. If the antenna light comes on when the SWR is below 3, then the antenna light needs to be adjusted.

This document describes how to adjust the antenna light. Please read through the procedure. If you do not feel confident that you can follow the procedure, then please visit a local radio technician or send your radio to Cobra Factory Service.

Step 1 – Unscrew the bottom cover



Step 2 – Remove the bottom cover

As you can see, the speaker is attached to the cover and there are wires going to the speaker.

Just set the cover next to the chassis as shown below.



Step 3 – adjust VR6

1. Turn on the radio.
2. Have the antenna disconnected.
3. Key the microphone.
4. Turn VR6 until the antenna light goes out.
5. Slowly turn VR6 just until the antenna light comes on.

(don't worry, you will not hurt the radio)

Done!

